



## HIGHVIEW HOUSE

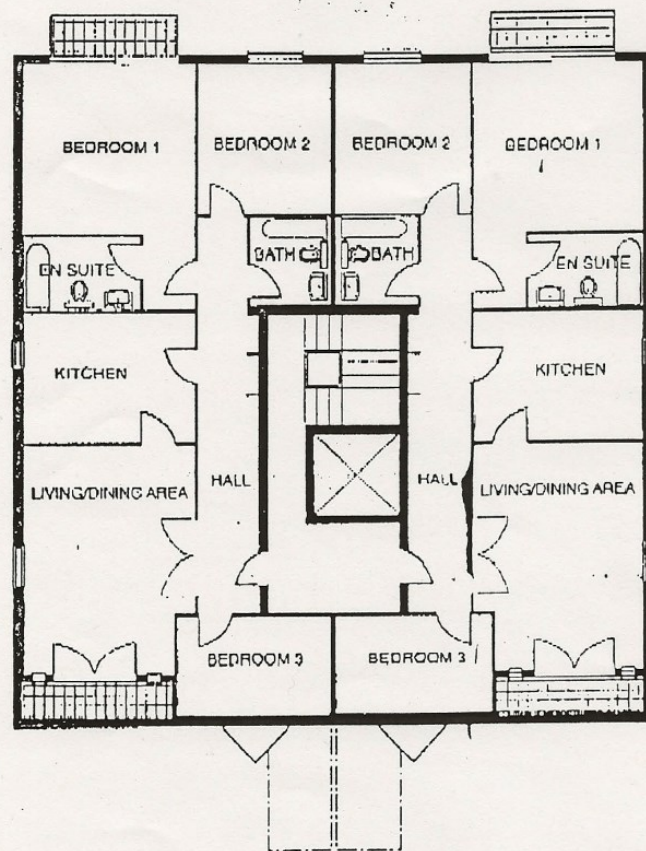
LONDON, NW4 2TH

£680,000  
LEASEHOLD

We are delighted to offer a 3 bedroom 1st floor flat in this purpose built block overlooking Hendon Park

**LONDON**  
**HOMESTEAD**





♦ Front and Rear Balconies

### First/Second Floor

#### Living/Dining Area

1st Floor 18'5" x 12'9"

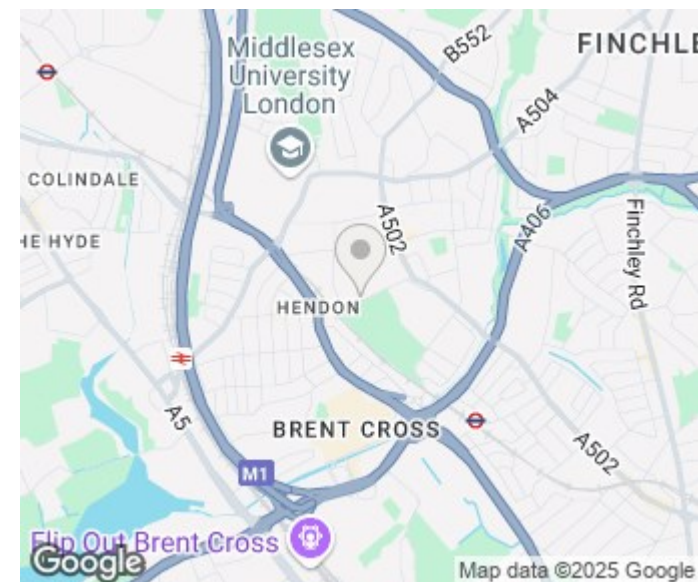
2nd Floor 21'3" x 12'9"

Kitchen 12'9" x 11'2"

Bedroom 1 11'2" x 11'11"

Bedroom 2 11'2" x 9'6"

Bedroom 3 11'2" x 7'2"



Energy Efficiency Rating		
	Current	Potential
Very energy efficient - lower running costs		
(92 plus) <b>A</b>		
(81-91) <b>B</b>		
(69-80) <b>C</b>		
(55-68) <b>D</b>		
(39-54) <b>E</b>		
(21-38) <b>F</b>		
(1-20) <b>G</b>		
Not energy efficient - higher running costs		
<b>England &amp; Wales</b>	EU Directive 2002/91/EC	

Agents Note: Whilst every care has been taken to prepare these particulars, they are for guidance purposes only. All measurements are approximate and are for general guidance purposes only and whilst every care has been taken to ensure their accuracy, they should not be relied upon and potential buyers/tenants are advised to recheck the measurements

Hendon  
Highview House  
6 Queens Road  
Greater London  
NW4 2TH

02084 571188  
enquiries@londonhomestead.co.uk

**LONDON**  
**HOMESTEAD**